

Harvest the Sunshine

JA SOLAR

640W



JAM78D40 GB n-type Double Glass Bifacial Modules

Premium Cells

n-
Bycium+
16BB

MBB Half-Cell
Technology

26%

Up To

Cell Conversion
Efficiency

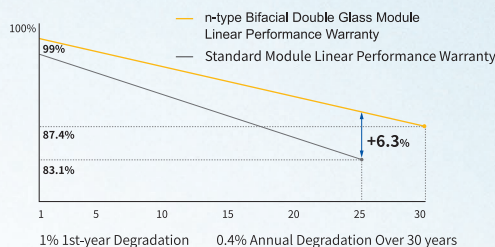
Premium Modules

Higher power
generation better LCOE

LID n-type with very
Lower LID

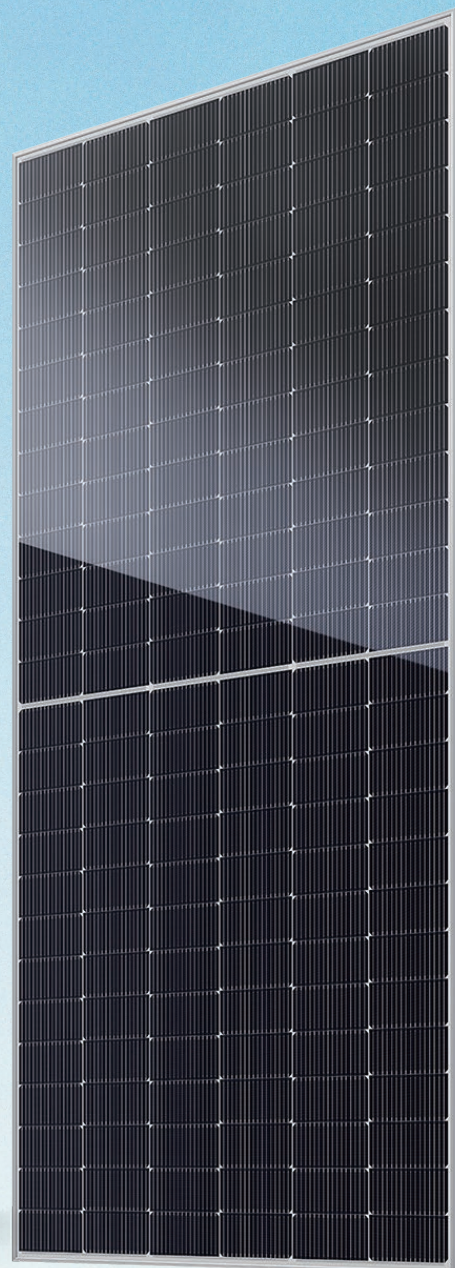
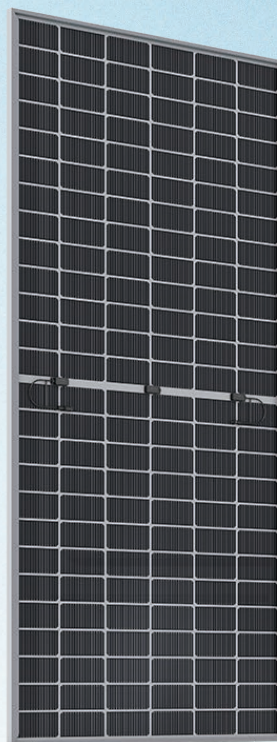
Better Temperature
Coefficient

Better low irradiance
response



12-year product warranty

30-year linear power output warranty

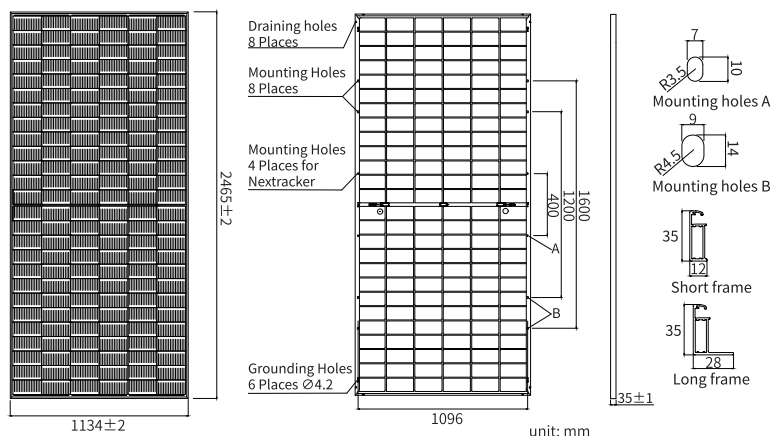


Comprehensive Certificates

- IEC 61215, IEC 61730, UL 61215, UL 61730
- ISO 9001: 2015 Quality management systems
- ISO 14001: 2015 Environmental management systems
- ISO 45001: 2018 Occupational health and safety management systems
- IEC 62941: 2019 Terrestrial photovoltaic (PV) modules - Quality system for PV module manufacturing



DEEP BLUE 4.0



MECHANICAL PARAMETERS

Cell	Mono
Weight	34.6kg
Dimensions	2465±2mm × 1134±2mm × 35±1mm
Cable Cross Section Size	4mm ² (IEC), 12 AWG(UL)
No. of cells	156(6×26)
Junction Box	IP68, 3diodes
Connector	QC 4.10-351/ MC4-EVO2A
Cable Length (Including Connector)	Portrait: 300mm(+)/400mm(-) Landscape: 1500mm(+)/1500mm(-)
Front Glass/Back Glass	2.0mm/2.0mm
Packaging Configuration	31pcs/Pallet, 496pcs/40HQ Container

Remark: customized frame color and cable length available upon request

ELECTRICAL PARAMETERS AT STC

TYPE	JAM78D40 615/GB	JAM78D40 620/GB	JAM78D40 625/GB	JAM78D40 630/GB	JAM78D40 635/GB	JAM72D40 640/GB
Rated Maximum Power(Pmax) [W]	615	620	625	630	635	640
Open Circuit Voltage (Voc) [V]	55.79	55.99	56.18	56.38	56.57	56.76
Maximum Power Voltage(Vmp) [V]	47.24	47.43	47.61	47.80	47.98	48.16
Short Circuit Current(Isc) [A]	13.69	13.74	13.79	13.84	13.89	13.94
Maximum Power Current(Imp) [A]	13.02	13.07	13.13	13.18	13.23	13.29
Module Efficiency [%]	22.0	22.2	22.4	22.5	22.7	22.9
Power Tolerance	0~+3%					
Temperature Coefficient of Isc(α _{Isc})	+0.045%/°C					
Temperature Coefficient of Voc (β _{Voc})	-0.250%/°C					
Temperature Coefficient of Pmax(γ _{Pmp})	-0.290%/°C					
STC	Irradiance 1000W/m ² , cell temperature 25°C, AM1.5G					

Remark: Electrical data in this catalog do not refer to a single module and they are not part of the offer. They only serve for comparison among different module types.

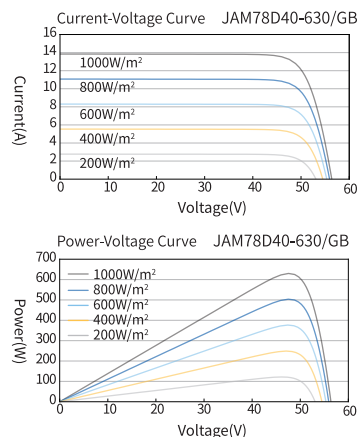
ELECTRICAL CHARACTERISTICS WITH 10% SOLAR IRRADIATION RATIO

TYPE	JAM78D40 615/GB	JAM78D40 620/GB	JAM78D40 625/GB	JAM78D40 630/GB	JAM78D40 635/GB	JAM72D40 640/GB
Rated Max Power(Pmax) [W]	664	670	675	680	685	691
Open Circuit Voltage(Voc) [V]	55.79	55.99	56.18	56.38	56.57	56.76
Max Power Voltage(Vmp) [V]	47.24	47.43	47.61	47.80	47.98	48.16
Short Circuit Current(Isc) [A]	14.79	14.84	14.89	14.95	15.00	15.06
Max Power Current(Imp) [A]	14.06	14.12	14.18	14.24	14.29	14.35
Irradiation Ratio (rear/front)	10%					

* For NextTracker installations, maximum static load please take compatibility approve letter between JA Solar and NextTracker for reference.

** Bifaciality=Pmax, rear/Rated Pmax, front

CHARACTERISTICS



OPERATING CONDITIONS

Maximum System Voltage	1500V DC
Operating Temperature	-40°C~+85°C
Maximum Series Fuse Rating	30A
Maximum Static Load, Front*	5400Pa(112 lb/ft ²)
Maximum Static Load, Back*	2400Pa(50 lb/ft ²)
NOCT	45±2°C
Bifaciality**	80%±10%
Safety Class	Class II
Fire Performance	UL Type 29/Class C

Specifications subject to technical changes and tests. JA Solar reserves the right of final interpretation.

Version No. : Global-EN-20240426A